



CATHOLIC HEALTH ASSOCIATION OF MANITOBA
ASSOCIATION CATHOLIQUE MANITOBAINE DE LA SANTÉ
МАНІТОБСЬКА КАТОЛИЦЬКА АСОЦІАЦІЯ ЗДОРОВ'Я



Interfaith Health Care
Association of Manitoba

Association confessionnelle
de la santé du Manitoba

**October
27th
10 am -
Noon**

Join Us

Advance Care Planning

Advance care planning is a process of formal decision making to help you establish decisions about your future care which takes effect when you lose capacity to make decisions for yourself.

It is a voluntary process and a written record of your wishes that can be referred to by caregivers and health professionals in the future.

Advance care planning is important in identifying early palliative care needs and recognising the end of life.

Other benefits include less aggressive medical care and an improved quality of life near death. It also helps families prepare for the death of a loved one, resolve family conflict, and cope with bereavement.

TOPICS COVERED

- Ethics behind advance care planning
- Health care proxy
- Surrogate decision making
- Process of public guardianship and trustee.
- How the PGT is appointed and the types of decisions that are made once appointed.

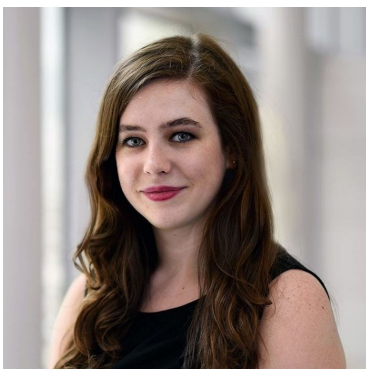
Register

CHAM & IHCAM MEMBERS: FREE
GENERAL PUBLIC: \$10.00

Click here to register:
<https://www.eventcreate.com/e/acp>

For more information:

Julie Turenne-Maynard
Phone: 204-235-3136
Cell: 204-771-5585
Email: jtmaynard@cham.mb.ca



KATARINA LEE

BA, MA, JD, HEC-C

Clinical Ethicist for St. Boniface Hospital and Réseau Compassion Network; Assistant Professor Department of Family Medicine, University of MB.



KERI RANSON

B.A. LL B, MBA.

Deputy Public Guardian and Trustee – Adult Services
Province of Manitoba